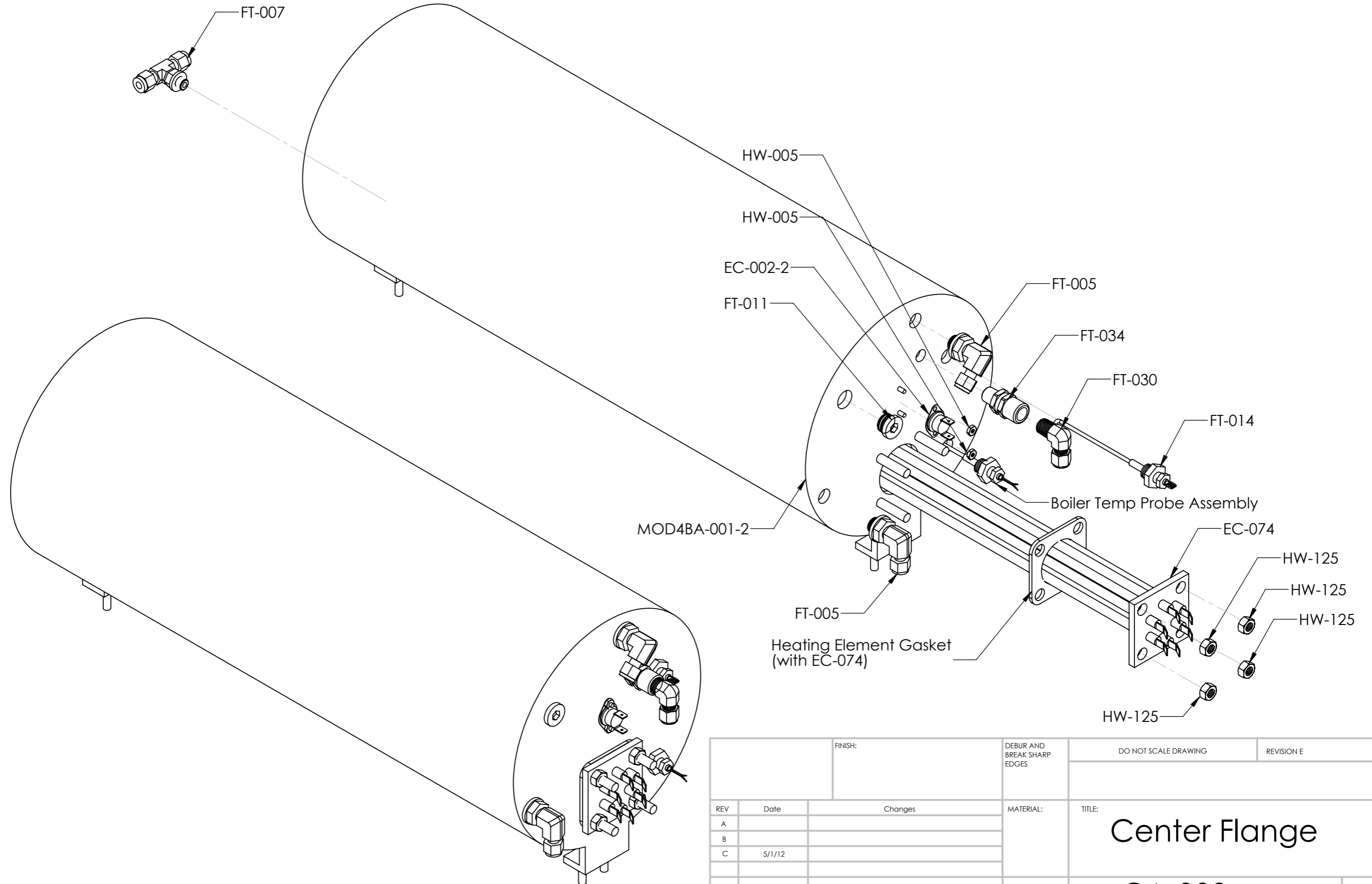


		FINISH:	DEBUR AND BREAK SHARP EDGES	DO NOT SCALE DRAWING	REVISION E
REV	Date	Changes		MATERIAL:	TITLE:
A					MOD4 Boiler Assembly
B					
C	5/1/12				
				DWG NO.	A3
				SA-Boiler Kit MOD3-MOD4	
				SCALE:1:8	SHEET 1 OF 3



FINISH:		DEBUR AND BREAK SHARP EDGES	DO NOT SCALE DRAWING	REVISION E
REV	Date	Changes	MATERIAL:	TITLE:
A				Center Flange
B				
C	5/1/12			
			DWG NO.	CA-009a
			SCALE:1:8	A3
			SHEET 2 OF 3	

PART NO.	PART DESCRIPTION	VENDOR
MOD4BA-001-2	304 stainless steel pacifated boiler	n/a
EC-002-2	Over-temp. thermal switch 24VDC, 290°F cutout	Kain Electronics KI-31
EC-074	240V, 5790W 3-Loop Single Phase Heating Element	Chromalox
FT-005	1/4"BSPP(O-ring face sealing) x 1/4"Tube (compression) Positionalble Elbow, 316 Stainless Steel	Seal Excel
FT-007	1/4"BSPP (O-ring face sealing) x 1/4" Tube x 1/4" tube (compression) Positionable In-Line Tee, 316 Stainless Steel	Seal Excel
FT-011	3/8" BSPP Plug (O-ring face sealing) 316 Stainless Steel	Seal Excel
FT-014	Level Meter Probe, Stainless steel	Gicar
FT-030	1/4" NPT x 1/4" Tube (compression)Elbow, 316 Stainless Steel	Parker
FT-034	1/4" NPT 60 psi Pressure relief valve, 316 Stainless Steel	Generant
HW-005-2	6-32 Narrow Stainless Steel Nut	McMaster
HW-125	5/16-18 Stainless Steel Nut	McMaster
Boiler Temperature Probe Assembly	Thermistor Probe (10,000 Ohm, G curve)	US Sensor Corp

*** If additional vendor or part information is needed please contact Alpha Dominche**

FINISH:		DEBUR AND BREAK SHARP EDGES	DO NOT SCALE DRAWING	REVISION E
REV	Date	Changes	MATERIAL:	TITLE:
A				Center Flange
B				
C	5/1/12			
				DWG NO. CA-009a
				A3
			SCALE:1:8	SHEET 3 OF 3